

# Magellan™ Touch

## Monitoring and Visualization

The monitoring and visualization layer solution within the Magellan Control System – Magellan Touch – provides an intuitive operational layer for production and routing control.

## Magellan Touch

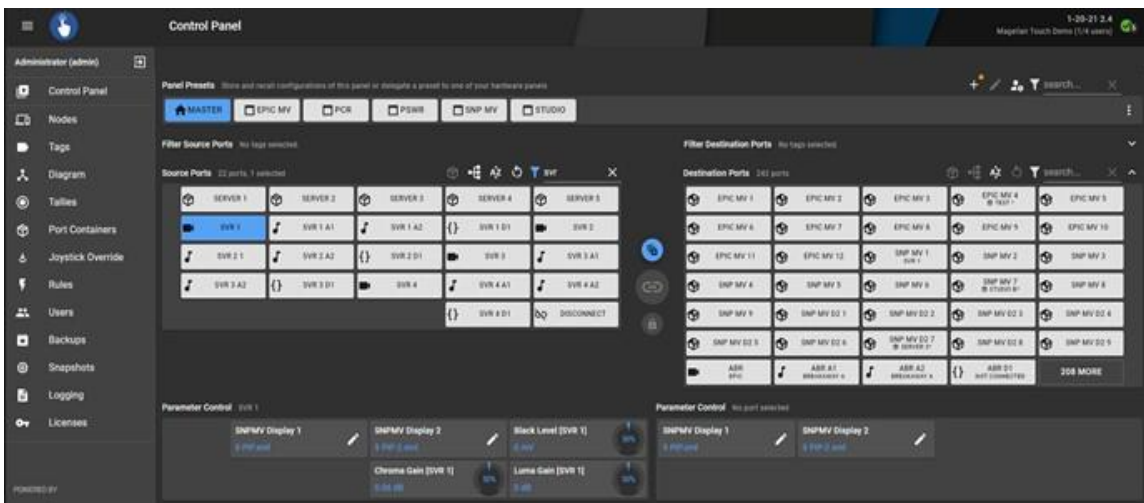
Magellan Touch is a production operations interface layer, designed for operators in live and playout environments. Magellan Touch integrates processing controls and routing on control surfaces, providing a highly configurable solution that can be changed on the fly by each operator. Magellan Touch supports numerous third-party parametric, routing, tally and switcher protocols.

Magellan Touch features:

- Live production operational control for media infrastructure
- Dynamic control surfaces combine routing and parametric controls
- Rich filtering and organizing capabilities utilizing flexible grouping tags
- Role-based user rights management
- Comprehensive TALLY & UMD
- Easy deployment, including mobile browsers, touch screens, tablets, and LCD push-button control panels

**Routing Control** - Magellan Touch connects to video, audio baseband or IP routing systems through standard protocols and dedicated integrations. Magellan Touch supports the readout of labels and configurations to minimize configuration and setup times. In addition to Imagines LRC protocol

**Parameter Control** – In addition to routing control, parameters of supported devices can be adjusted on-the-fly without leaving the user interface. Magellan Touch can display the parameters in a contextualized way; only the currently relevant parameters are shown in the user interface. Reassigning parameters from the device’s supported parameters is possible through a filterable parameter browser engine.



Magellan Touch Interface



## Magellan Touch (continued)

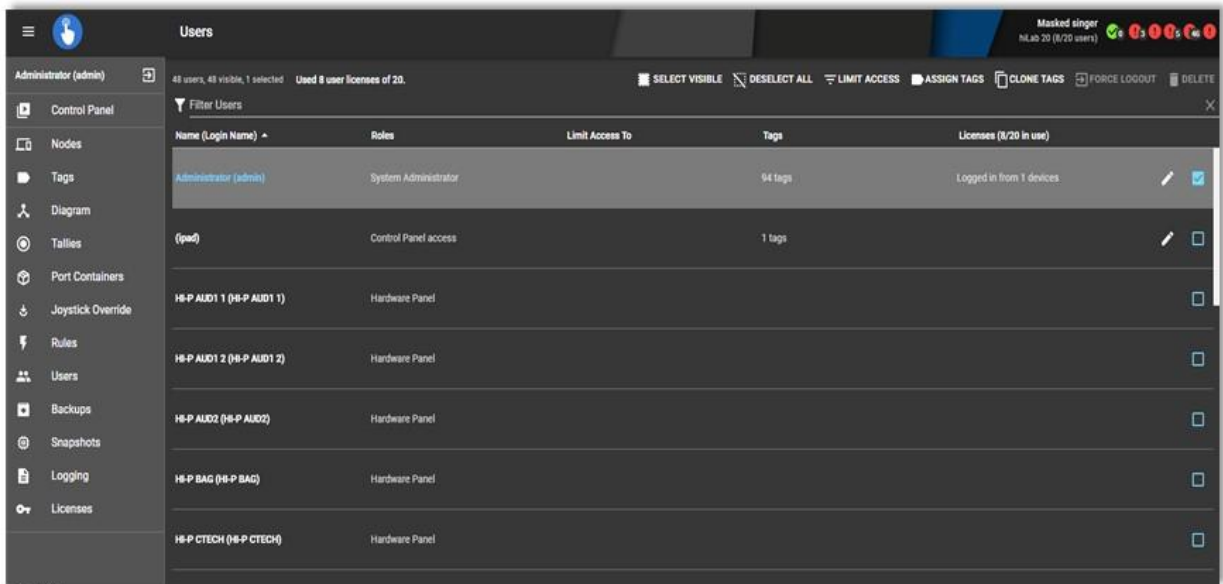
**UMD and Tally Information** – An unlimited number of tallies can be calculated for all resources in the system. The majority of multiviewers and monitors can be controlled to display information like currently active source, tally signalization and other system metadata. Supports TSL V3/V5 protocols.

**Reduced Configuration Effort** – The main paradigm of Magellan Touch is to reduce configuration effort, to enable users to fully control their system and always deliver a clear and simple representation of resources available to them. To achieve that, Magellan Touch provides pre-defined user interfaces of commonly used workflows and concepts to quickly and easily create personalized user interfaces for the specific workflow tasks.

**Logical Tags** – Layered logical tags can be created by an operator to describe attributes of resources available to them. Magellan Touch uses the tags to automatically generate control surfaces and operator can use tags to quickly filter the sources needed for given operations.

Tagging allows for the system to reduce the configuration effort. Changes in panel assignments or user rights can be reflected in changes of tag assignments and rolled out in entire system in real time without any further configuration effort.

**User Rights Management** – The User Rights Management system allows the restriction of access to operations or resources in the system and minimizes the potential of misconfiguration or human error. Multiple administrative users can configure the system simultaneously at any time. Operators only see resources available to them for the task or event they are working on.



**Secure Per-Operator Access Control**

## Magellan Touch LCD Control Panels

**Magellan Touch LCD Push Button Panels** – Along with highly intuitive HTML5 based software control surface, there is always a need for dedicated hardware-based control panels in any media operations environment. Magellan Touch supports a variety of LCD push button control panels with rotary encoders for routing and parametric control. These hardware-based panels can be easily configured using the same logic and features as the HTML5 based software control surfaces.

**MTOUCH-PUSH18**- 19" 1RU MAGELLAN TOUCH PANEL WITH 18 LCD PUSH BUTTONS, 2 ROTARY



**MTOUCH-PUSH20** - 19" 1RU MAGELLAN TOUCH PANEL WITH 20 LCD PUSH BUTTONS



**MTOUCH-PUSH36** - 19" 1RU MAGELLAN TOUCH PANEL WITH 36 LCD PUSH BUTTONS, 2 ROTARY ENCODERS



**MTOUCH-PUSH54** - 19" 2RU MAGELLAN TOUCH PANEL WITH 54 LCD PUSH BUTTONS, 2 ROTARY ENCODERS

